

Aboriginal Rock Art

FACT SHEET

www.wirraminna.org/drdave-outback/

Outback NSW contains many hidden treasures. Rocky outcrops were used for both shelter and ceremonial purposes. We can see signs of human habitation by the paintings that have been left on the overhangs and walls. Some of these are paintings by people who have lived in the outback for thousands of years - Aboriginal Australians. In Gundabooka National Park, the native people were called the Ngemba.

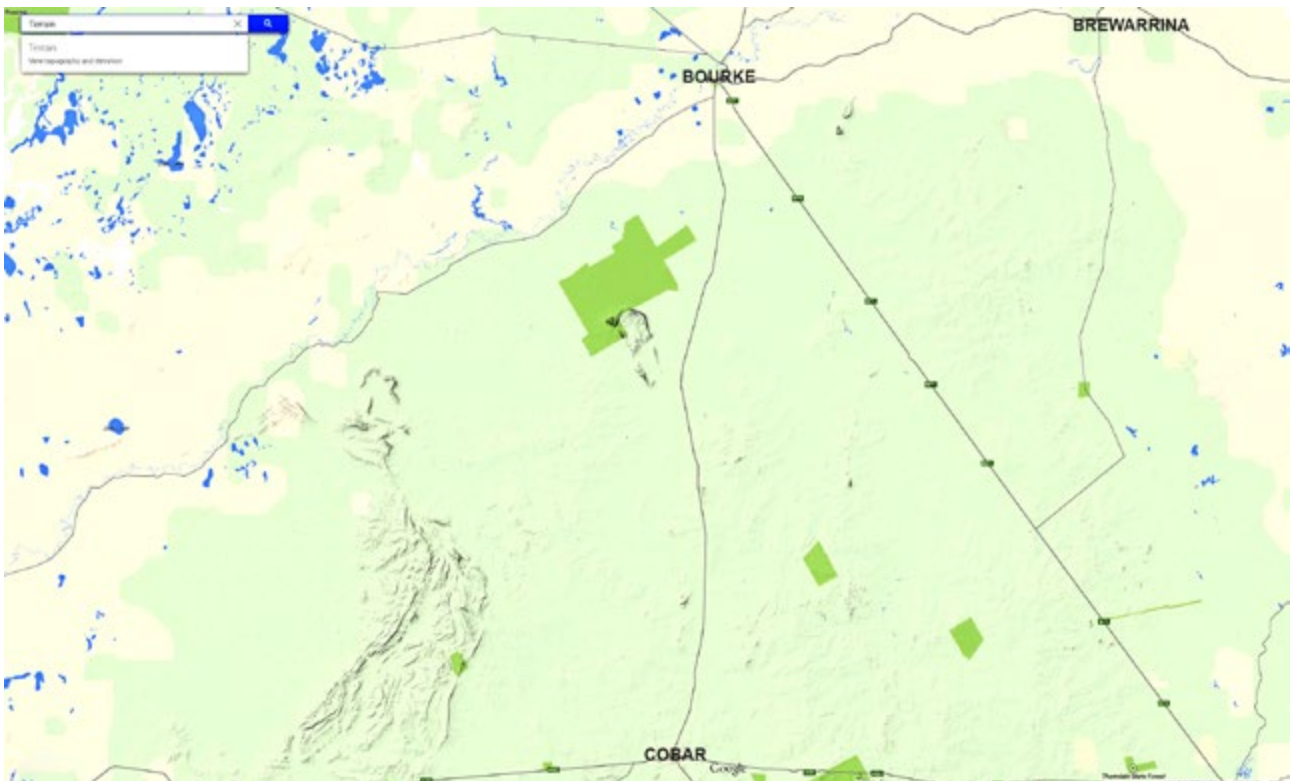
- Ngemba people believe the ancestral creator, **Baiaime**, created the landscape at Gundabooka National Park with the help from the Goanna, Echidna, Emu and Kangaroo.
- **Googa** is the Goanna. When Googa laid down to rest, Mount Gundabooka was formed.
- **Thikabilla** is the Echidna. When Thikabilla laid down to rest, Mount Oxley was formed.
- **Ngurri** (Noori) the Emu created Mount Grenfell.
- **Bundah** is the Kangaroo. Bundah formed Coronga Peak.
- **Wakakirri** is the Ngemba word for dance. One of the most famous dances is the shake-a-leg dance.
- **Yapa** is the Ngemba word for paintings.
- Natural materials were used to form the rock art paintings, such as pipeclay and ochre.
- The paintings show some of the tools and animals that were important for daily life.



Aboriginal Rock Art ACTIVITIES

www.wirraminna.org/drdave-outback/

1. Identify as many animals or symbols as you can from the "Rock Art" video.
2. Using Google Maps, find Gundabooka National Park, Mount Gunderbooka, Mount Oxley, Mount Grenfell and Coronga Peak. Mark their approximate location on the map.



3. Find out more about the shake-a-leg dance. There are many videos online of this dance, see if you can find one.
 - In what States will you find Aboriginal nations using the shake-a-leg dance?
 - What is another dance that is commonly performed by Aboriginal nations?
4. Byrock Rock Holes is the main site of the Ngemba people's creation story. This is the spot where Baiame created animals and the Ngemba people. Where is this sacred site? Mark it on the map. Use the NSW Atlas of Aboriginal Places to find other sacred sites: www.environment.nsw.gov.au/aboriginalplaces/index.htm
5. **Wawai**, the Rainbow Serpent, created the waterholes, and the Ngemba people followed Wawai's tracks to find water. There is a chain of waterholes that led from Gundabooka to Byrock. See if you can find these waterholes using Google Maps - Satellite map.