

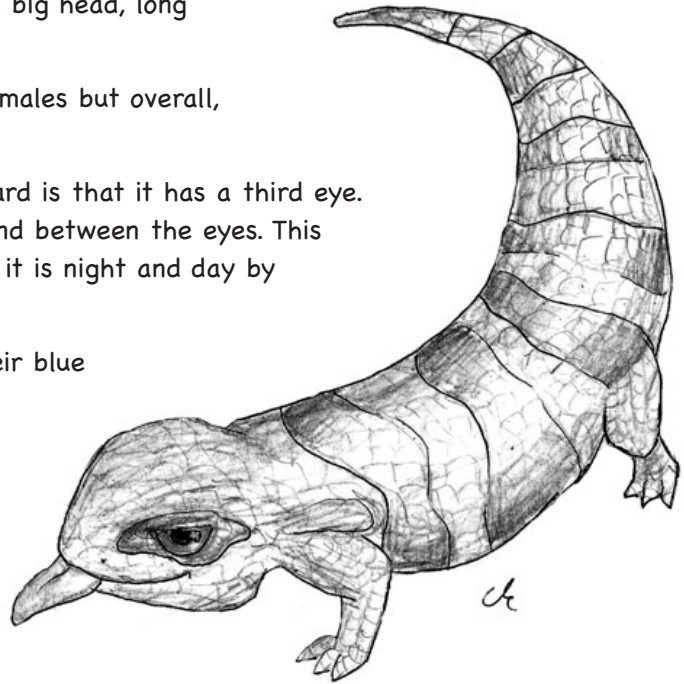
# What have we got here?



## Eastern Blue-Tongue Lizard

Box-Gum Grassy Woodlands provide homes for native animals, birds, reptiles and insects. One of the quietest, slowest, but more commonly-seen reptiles is the Eastern Blue-Tongue Lizard.

- The Eastern Blue-Tongue Lizard is a member of the reptile family.
- They have grey and dark stripes on their back.
- They have an unusual body proportion with a big head, long body, short legs and small feet.
- Male Blue-Tongues have larger heads than females but overall, the females are larger.
- A fascinating feature of the Blue-Tongue Lizard is that it has a third eye. This can be found on the central scale diamond between the eyes. This third eye helps the Blue-Tongue figure out if it is night and day by letting light go straight into their brain!
- The name Blue-Tongue Lizard comes from their blue tongue. The blue-tongue frightens any predators by opening their mouths and showing their tongue. The predator thinks they are sick and leaves them alone.
- Some of the Blue-Tongues' main predators are dogs, cats and foxes.
- The Eastern Blue-Tongues prefer to live in open country with plenty of cover from logs, rocks, leaf litter and tall grasses. They live underneath logs and use rocks for sun basking.
- The Blue-Tongues eat snails, slugs, caterpillars, beetles, crickets and even other smaller lizards.
- Blue-Tongues have very strong jaw muscles to crush big beetles and snail shells.
- They live alone for most of the year except in the mating season, which is between September and November.
- A lucky Blue-Tongue can live for many years – some have reached the age of 30 in the wild.
- We can help the Blue-Tongue Lizard by being responsible pet owners, and creating environments for them to use by leaving fallen timber, leaf litter and rocks so they have somewhere to live.



# Activities



## Eastern Blue-Tongue Lizard

1. What family is the Eastern Blue-Tongue Lizard from?
2. Who is bigger in size, the male or female Blue-Tongue?
3. Where will you find the Blue-Tongues third eye? What is the use of the third eye?
4. What device do they have to help scare away a predator?
5. What animals are threats to the Eastern Blue-Tongue Lizard?
6. Eastern Blue-Tongue Lizards have a preferred habitat, please explain this habitat.
7. The Blue-Tongue lives alone for most of the year except for which months? Why only these months?
8. List some of the foods that the Blue-Tongues likes to eat. Draw two examples.
9. How many years can an Eastern Blue-Tongue Lizard live up to?
10. What is something you can do around your home to encourage an Eastern Blue-Tongue Lizard to live there?

