

Hawksview Wetlands



Table Top Public School



Creative Catchment Kids

Creative Catchment Kids is an initiative of Wirraminna Environmental Education Centre. It aims to improve engagement between our funding partners and school students by providing opportunities for positive and authentic ventures that encourage students to develop creative solutions to agriculture and natural resource management issues.

www.wirraminna.org/creative-catchment-kids/

Wirraminna Environmental Education Centre

The Wirraminna Environmental Education Centre is located in Burrumbuttock, north of Albury in southern NSW. Since 1995, the centre, which is adjacent to Burrumbuttock Public School, has provided opportunities for discovery and learning about the natural environment, the ecology of the local woodlands and the beauty of native plants.

www.wirraminna.org

Enviro-Stories

Enviro-Stories is an innovative literacy education program that inspires learning about natural resource and catchment management issues. Developed by PeeKdesigns, this program provides students with an opportunity to publish their own stories that have been written for other kids to support learning about their local area.

www.envirostories.com.au

Hawkswiew Wetlands

Authors: Charlie Shoemark, Denzel Spurr,
Thomas Harmer and Ethan Thomas

School: Table Top Public School

Teacher: Andrew McEachern

Murray Wetland Carbon Storage Project

In 2017, students involved in the Creative Catchment Kids program participated in a field day at a local wetland as part of the Murray Wetland Carbon Storage project. Students spent time with community members who were involved in the project to find out about them and what makes their wetland special. They then developed these stories into a series of books aimed at teaching other kids about the importance of wetlands. This program is supported by Murray Local Land Services and the Murray Darling Wetlands Working Group Ltd. with funding from the Australian Government.

Creative Catchment Kids is part of Enviro-Stories, a PeeKdesigns education program.

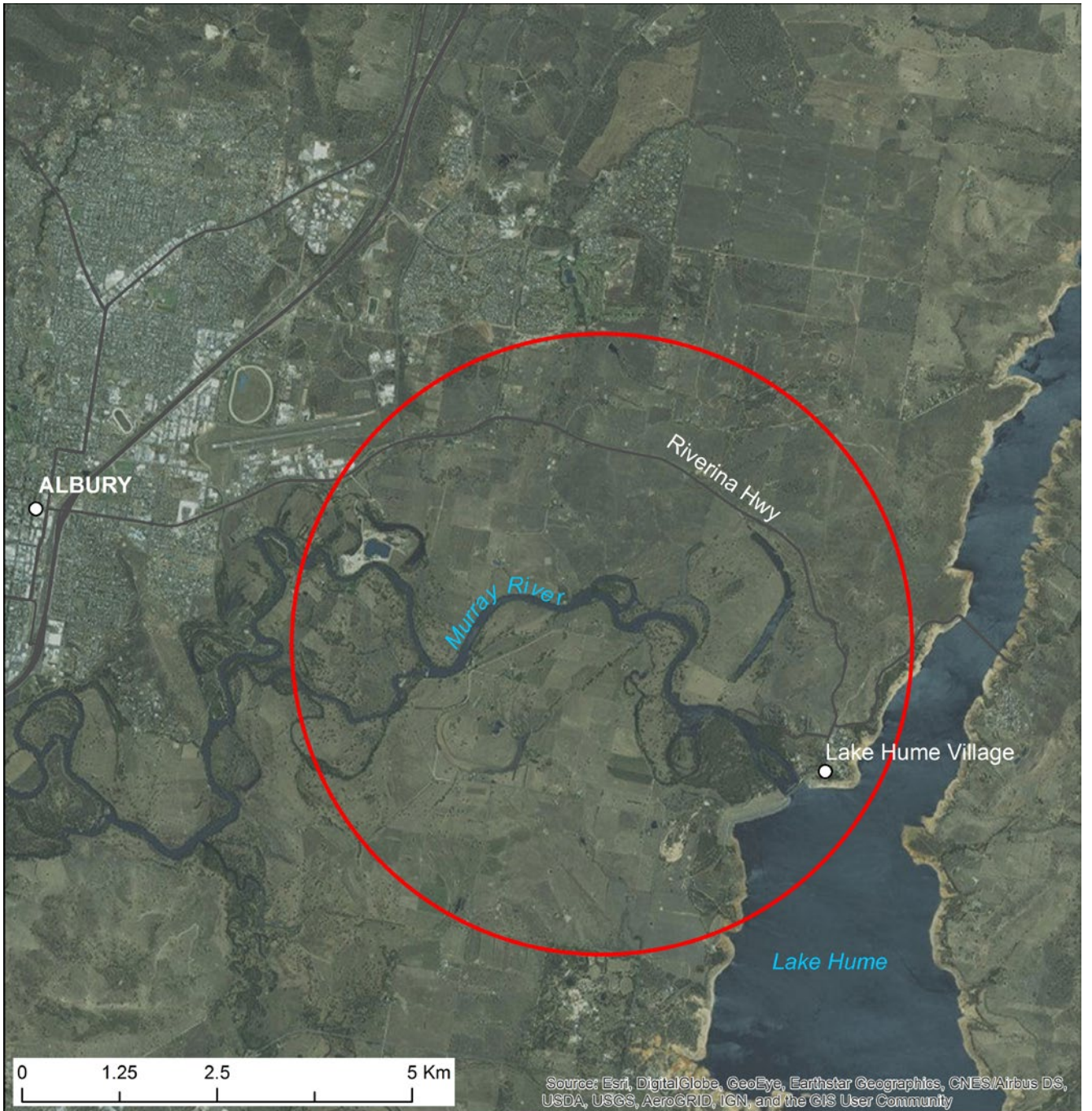


Michael was born at 'Hawksview' and his wife Ros has been here for 47 years.

The special thing about "Hawksview" is that the property is often thought of as an area where the mountains and the plains meet. The farm comprises 2000 acres of very fertile soil on the Murray River floodplain just below the Hume Weir Wall near Albury.

The farm is mainly cattle and sheep.





Ros takes us to her wetlands which have recently been fenced off.



Ros talks to us about the lagoon. She monitors her wetland regularly.

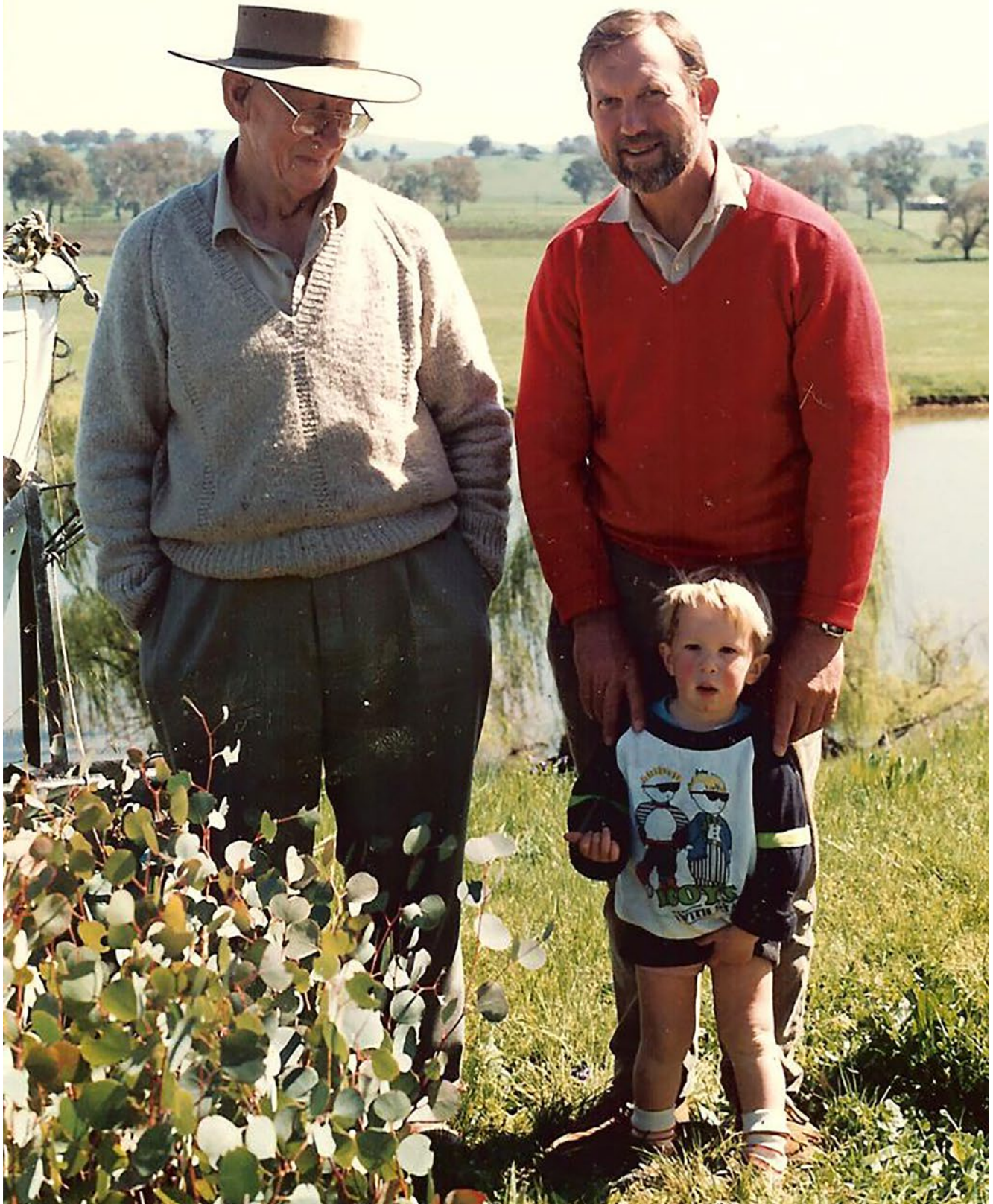
History of 'Hawksview'

The property is now owned by Michael and Ros Webb. Their son Tom is the fifth generation to live on 'Hawksview'.

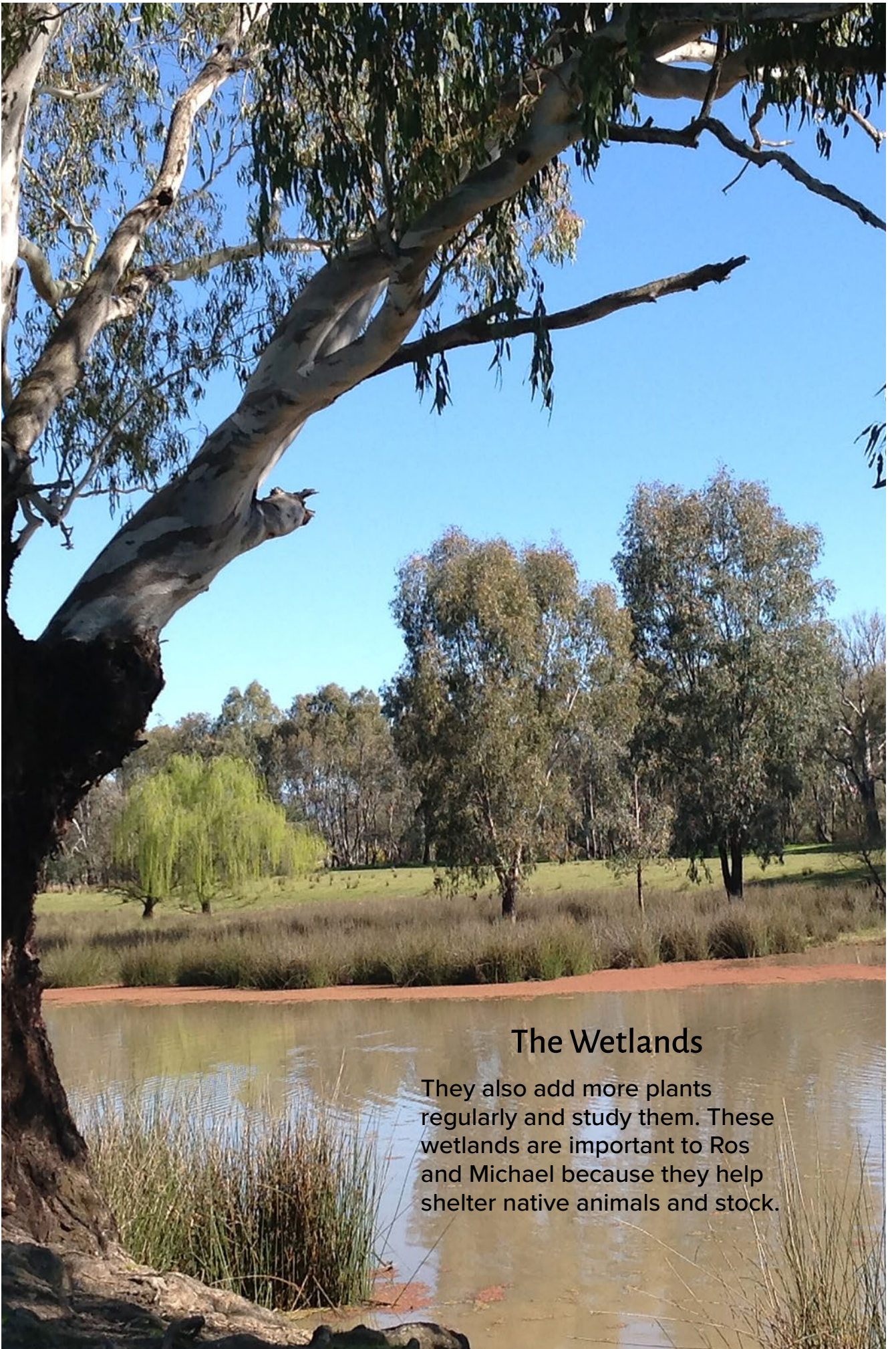


Family Life

Ros and Michael have eight grandchildren that come and visit the farm and wetlands regularly. They go to school in Wagga Wagga and the Blue Mountains, help out when visiting and enjoy doing all the outside jobs.



Mr. Phil Webb (left), Mr. Michael Webb (right) and Tom Webb - taken in 1990.



The Wetlands

They also add more plants regularly and study them. These wetlands are important to Ros and Michael because they help shelter native animals and stock.

Animals of the Wetlands

The most common animals that come to the wetlands are birds, possums, insects, snakes and frogs.

A special highlight for us was seeing the nest of a White-bellied sea-eagle. Other common visitors to the wetland include Australian pelicans, Black swans, Barking owls, Brown treecreepers, Platypus and tortoises. Many of these animals are becoming endangered. So this habitat is very important to the animals.



White-bellied sea-eagle, K. Coleman



Black swan, K. Coleman



Australian pelican

The ducks pictured below are Northern shovelers. They are a migratory bird that is rare to Australia. They spend most of their time in southeast Asia, mainly the Phillipines and Borneo. We think it was pretty special to see this whole family having a rest here at 'Hawksview'.





This magnificent River Red Gum tree on 'Hawksview' is used by many birds for nesting such as the White-bellied sea-eagle.



Ros showed us photos of the wetlands in the past; and how it has progressed to look like it does today. The photos show us how much things have changed and developed over the years.

September 2002 ▶



August 2016, notice the tree growth on the far bank ▼



▲ March 2016

◀ September 2016, pre-flood

▼ February 2017, post-flood



This shows how fencing off has let the young trees grow.







Charlie Shoemark, Thomas Harmer, Denzel Spurr and Ethan Thomas
2017 Year 6, Table Top Public School

Congratulations!

Wirraminna Environmental Education Centre and
the Creative Catchment Kids Program won the
National 2016 Yates Junior Landcare Team Award.

